



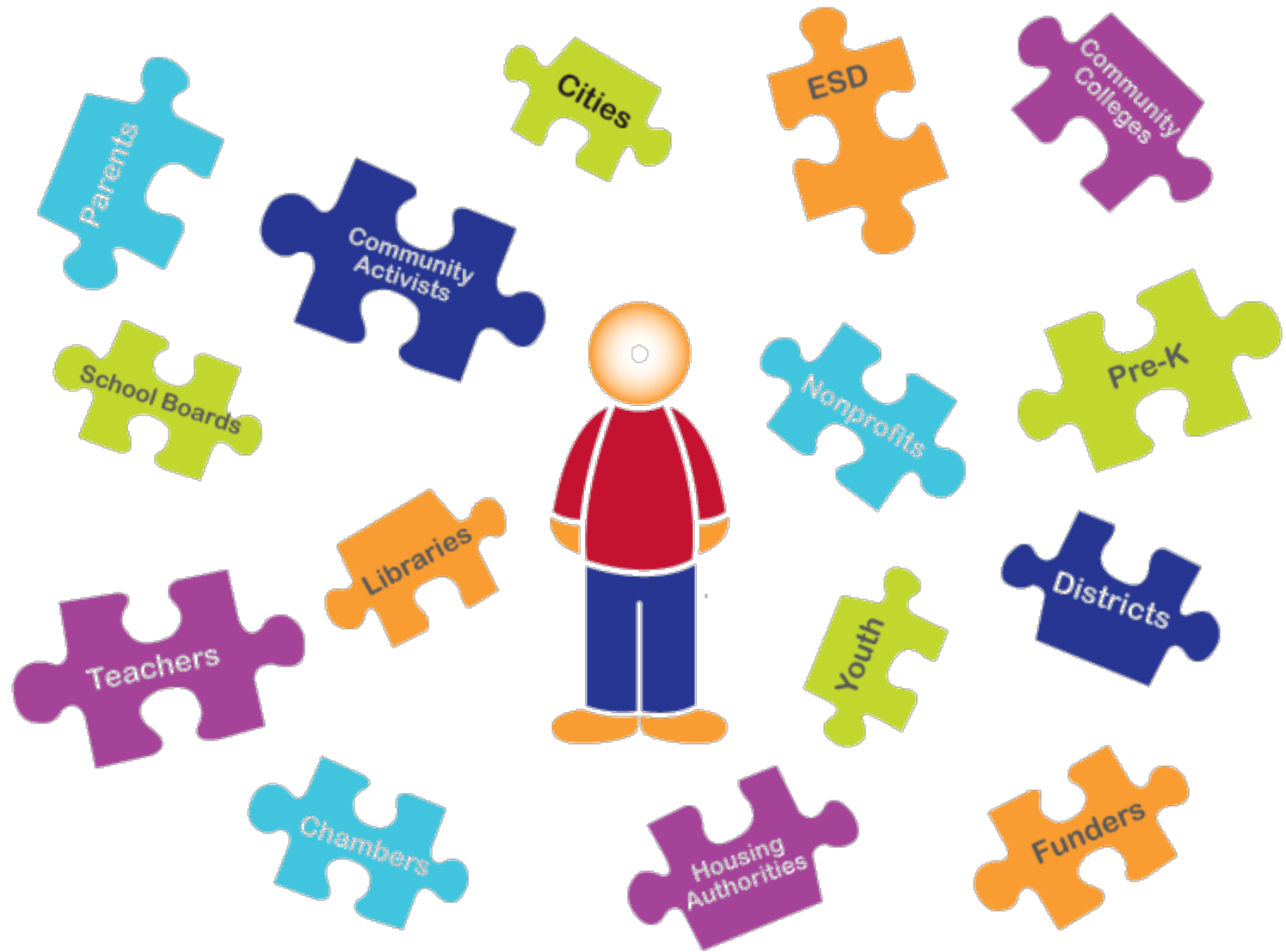
# The **ROAD MAP PROJECT**

*Supported by CCER*

## From Cradle to College and Career

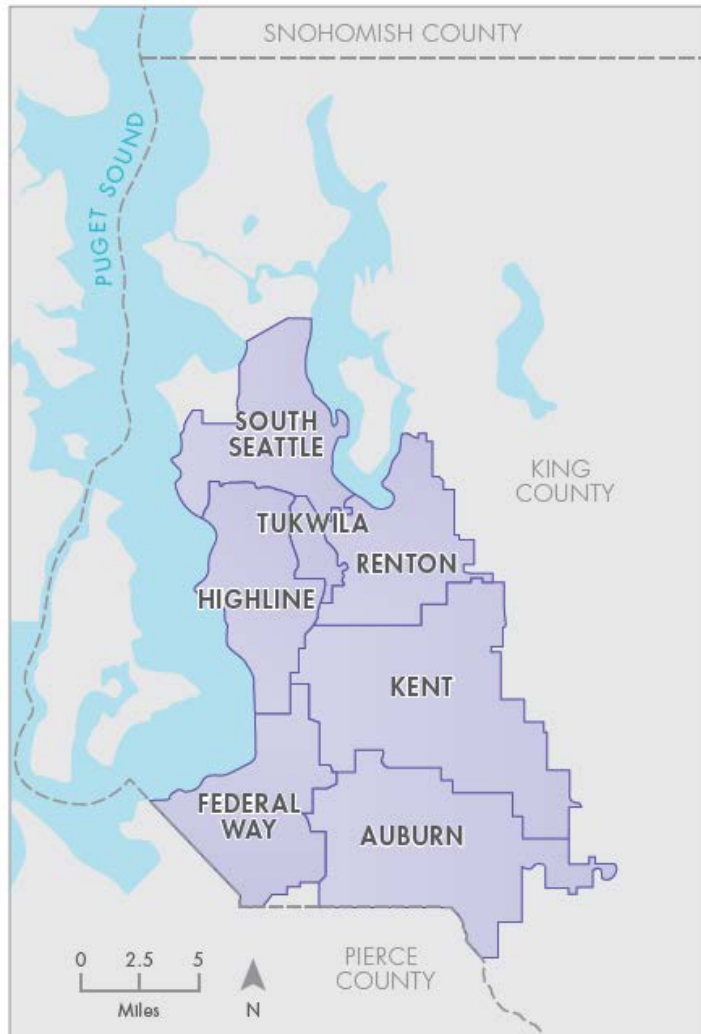
The Road Map Project is a collective impact initiative aimed at getting dramatic improvement in student achievement – cradle through college and career in South Seattle and South King County.







# The Road Map Project Region



120,890

Students in Road Map  
Project Region  
Schools

67%

Students of Color

59%

Low Income

16%

English Language  
Learners





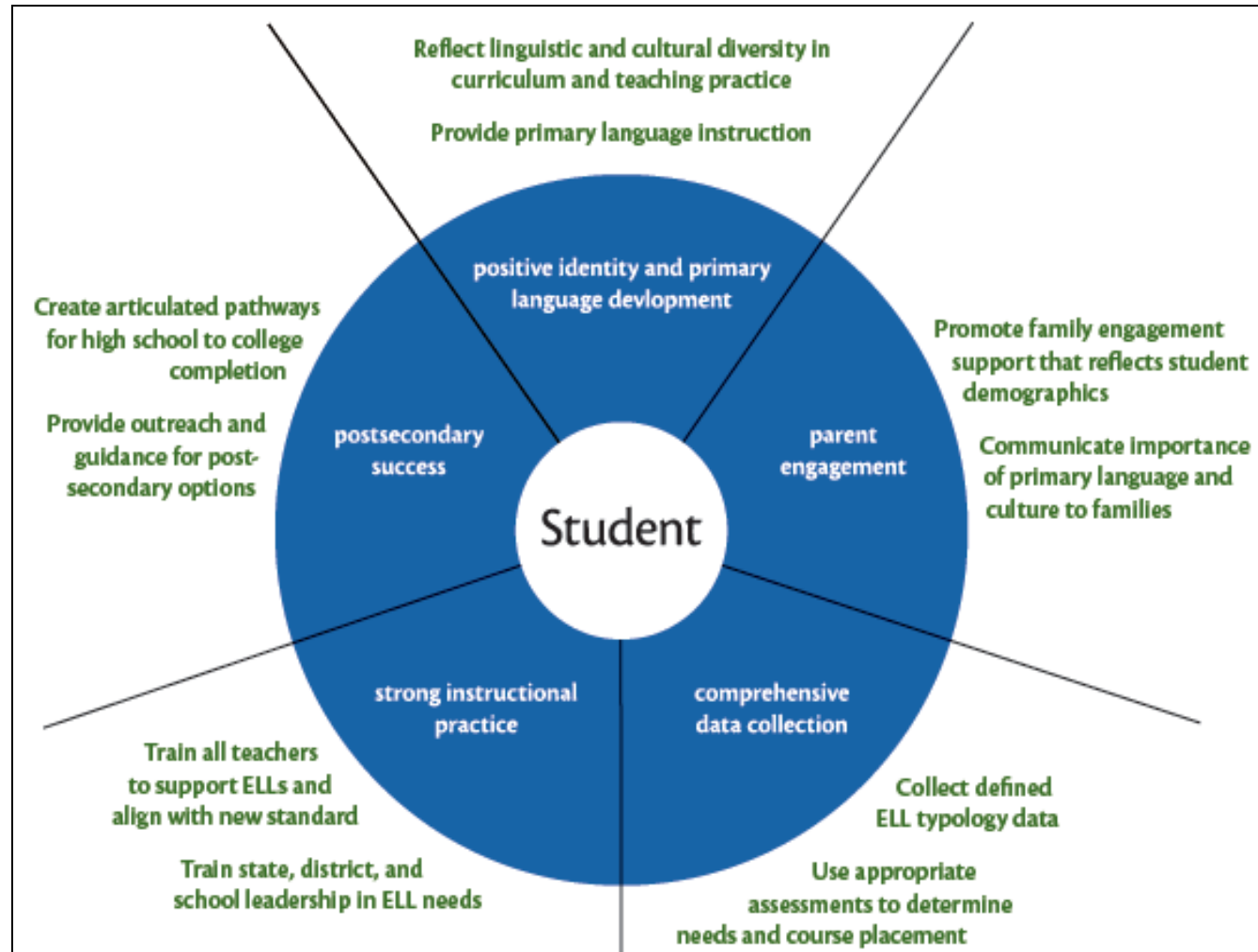
# Road Map Project Goal

The Road Map Project goal is to double the number of students in South King County and South Seattle who are on track to graduate from college or earn a career credential by 2020. We are committed to nothing less than closing the unacceptable achievement gaps for low-income students and children of color and increasing achievement for all students from cradle to college and career.

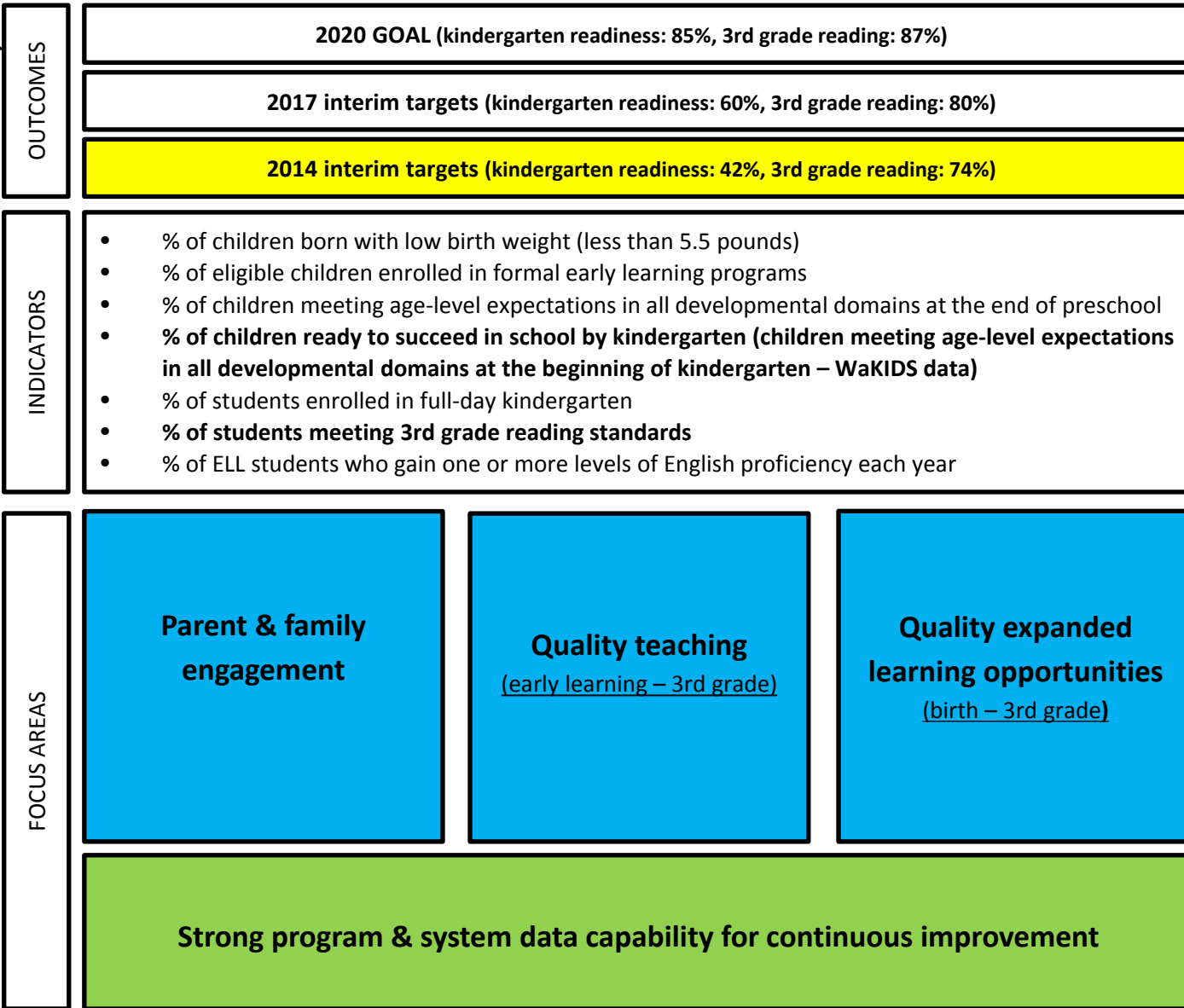


# ELL Action Plan Framework

We believe that linguistically and culturally diverse students and their families bring value and asset to our classrooms and communities. To ensure all students reach their full potential, the needs of current and former English language learners (ELLs) must be intentionally prioritized within our educational structure, with accountability tied to ELL student performance within all institutions.



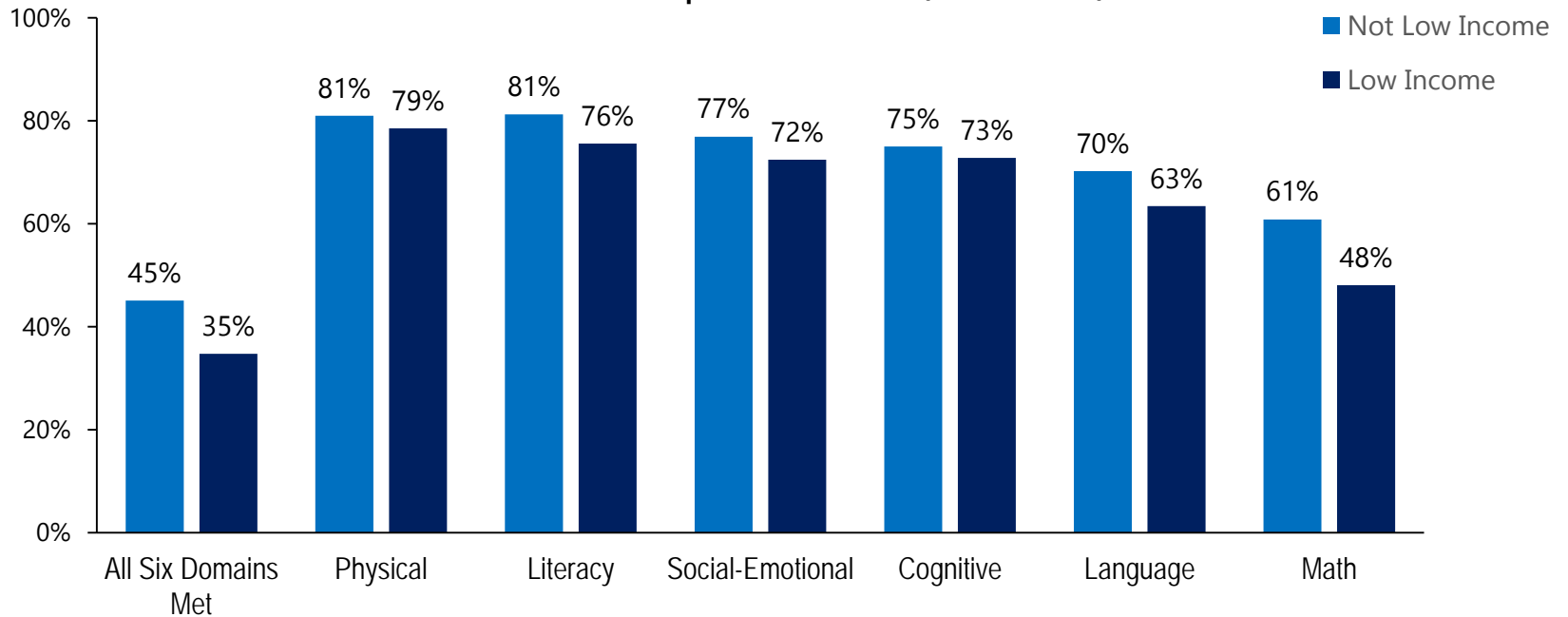
# ROAD MAP BIRTH TO THIRD GRADE ACTION PLAN FRAMEWORK







## Road Map Region Students in Kindergarten Meeting Age-Level Expectations (2013-14)

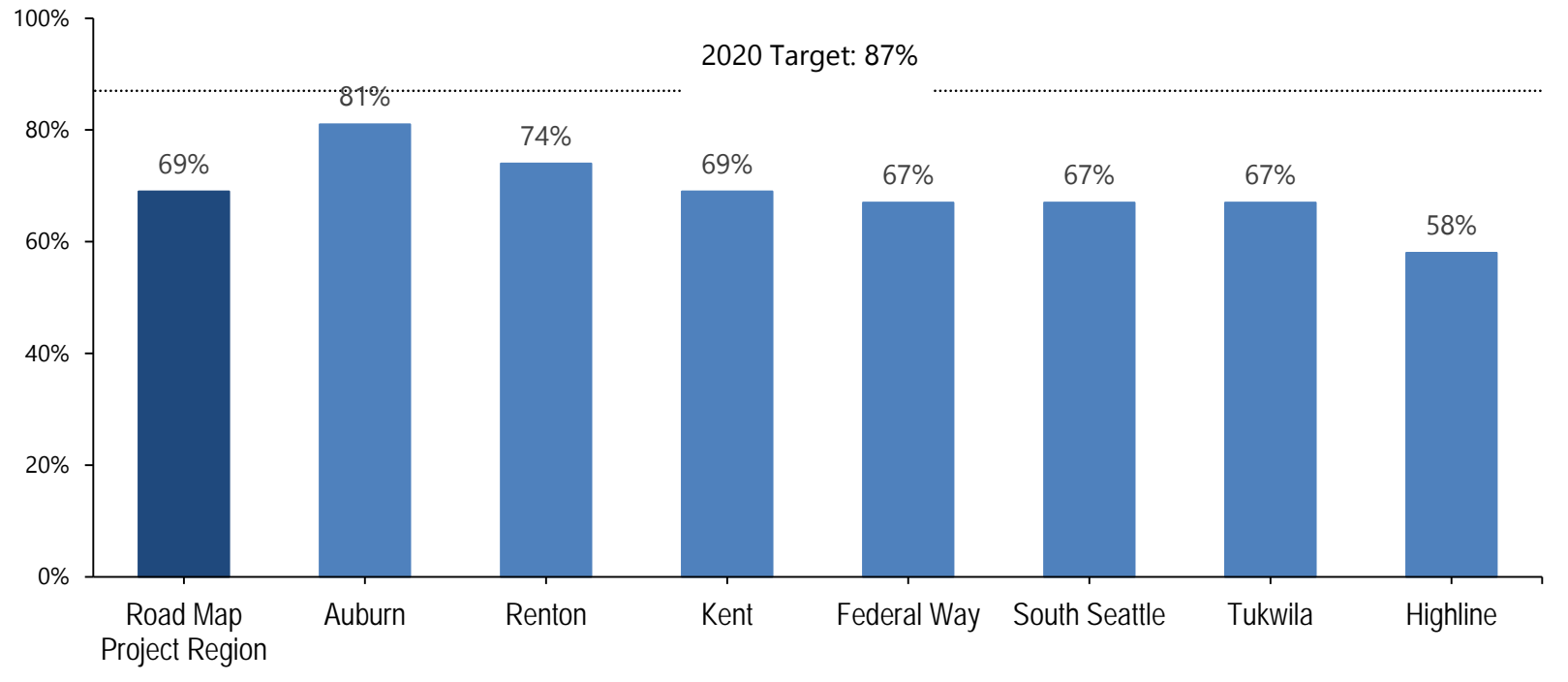


SOURCE: OSPI Report Card

NOTE: Does not include Auburn School District. Data includes Kent School District, which had very low (less than 50 out of about 1,000) students labeled Low Income. This may affect the results for the Region as a whole.



### 3rd Grade Reading; Road Map Region Students Meeting Standard (2012-13)

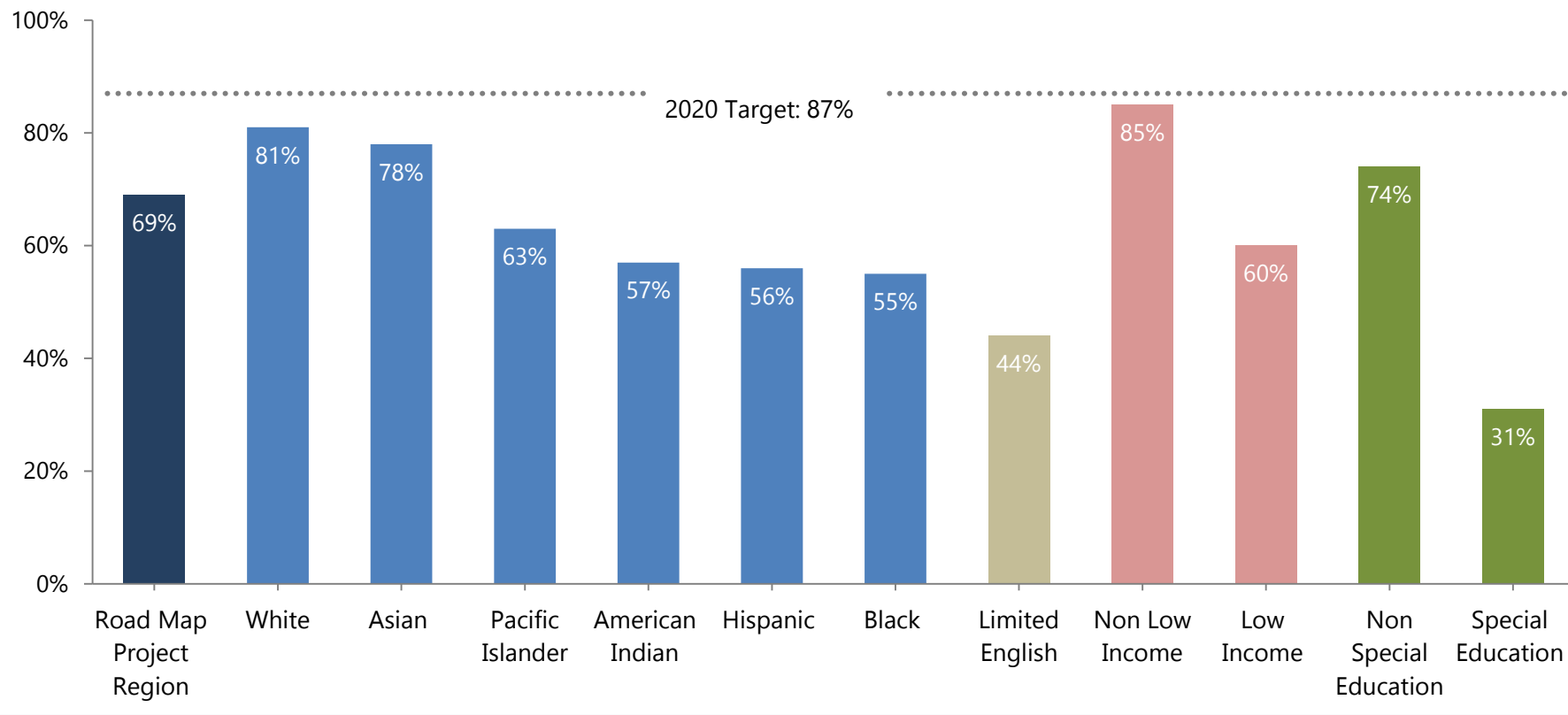


SOURCE: OSPI Report Card (MSP)





### 3rd Grade Reading; Road Map Region Students Meeting Standard (2012-13)



SOURCE: OSPI Report Card (MSP)



*Road Map Region*

# ***RACE to the TOP***



**Project 3A:** Establish a High-Functioning PreK-3rd Grade System Region-Wide

**Project 3B:** Investment Fund for PreK-3rd Grade Strategies and Systems at the Community Level



*Road Map Region*

# ***RACE to the TOP***



## **Framework for Planning, Implementing, and Evaluating PreK-3rd Grade Approaches**

Kristie Kauerz & Julia Coffman, University of Washington

### **Common language and a common tool for planning and implementing PreK-3rd Grade work**

- Cross-Sector Work
- Administrator Effectiveness
- Teacher Effectiveness
- Instructional Tools
- Learning Environment
- Data-Driven Improvement
- Family Engagement
- Continuity and Pathways

