



Expanding Effective ECEC Services for Young Refugee Children – Sweden

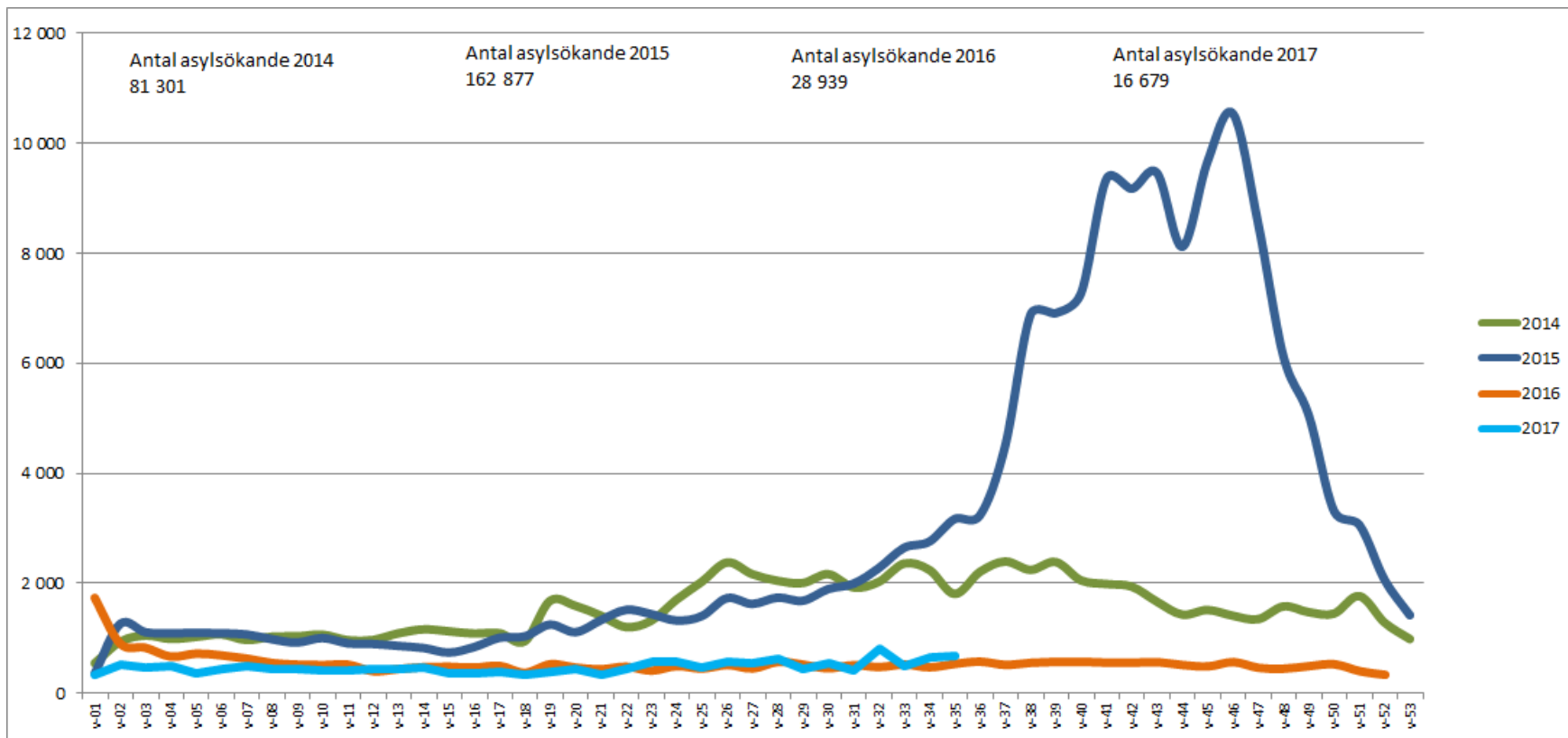
Berlin 20170912

Skolverket

The Swedish National Agency for Education

The National Agency for Education is the central administrative authority for the public school system, publicly organised preschooling, school-age childcare and for adult education.

The Swedish National Agency for Education is tasked with ensuring that all children and students have access to the same high-quality standard of education and activities in secure environments. Our mission is to create the best conditions for the children's development and learning and to help improve the students' learning outcomes.



Aims

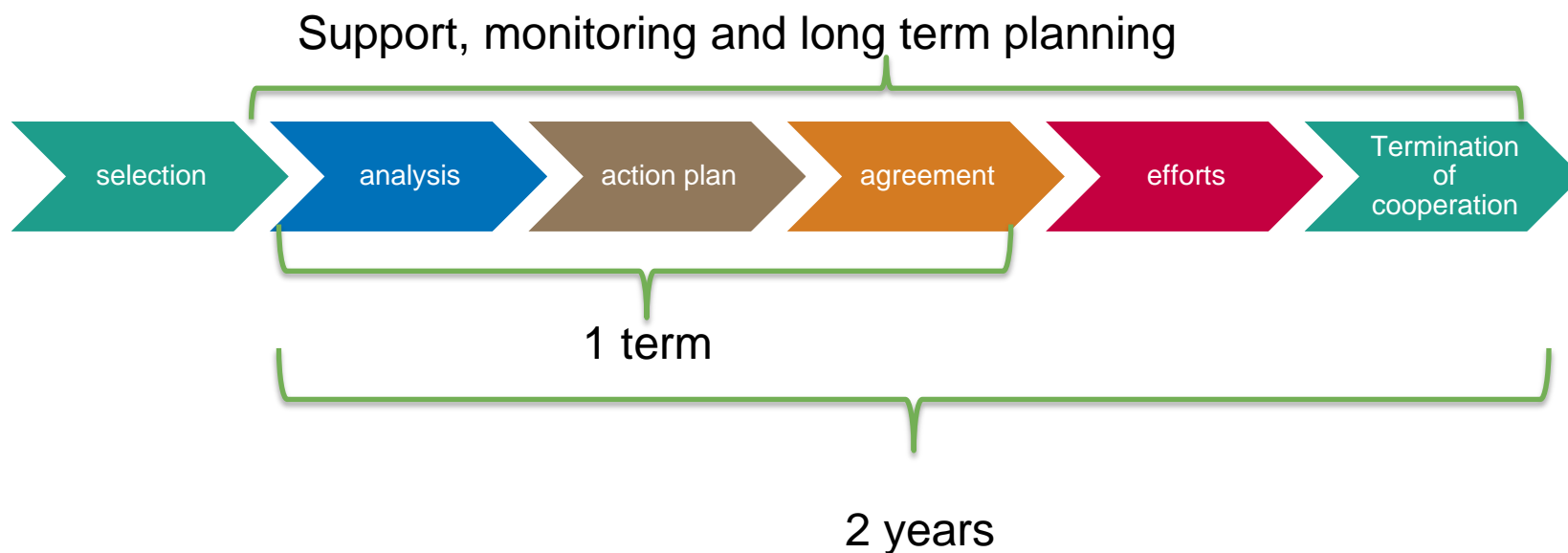
- "... to make interventions to improve the quality of education for newly arrived students and the needs of pupils with mother tongue other than Swedish"

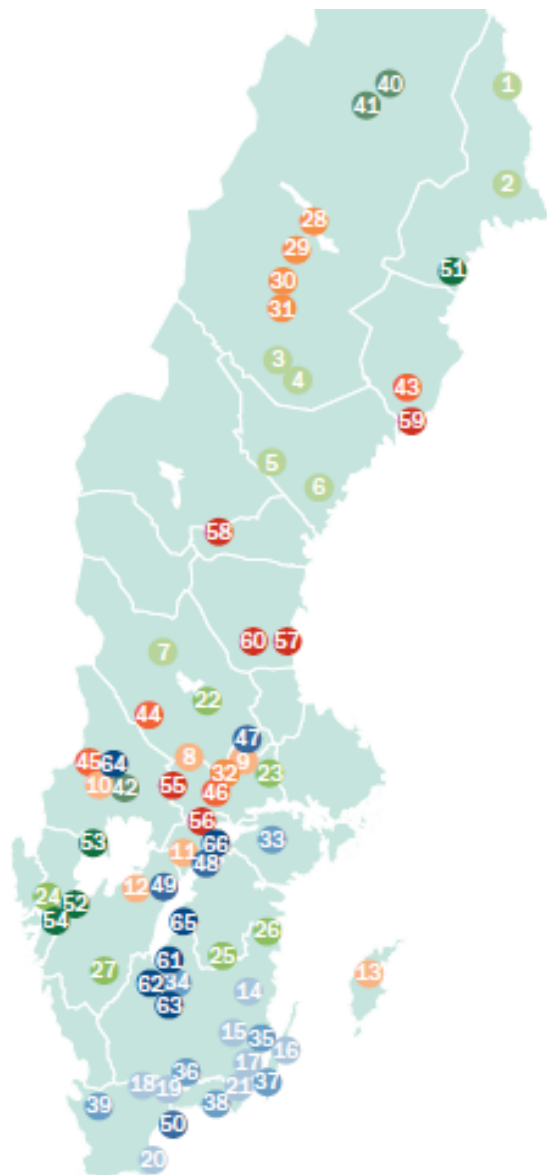
.... "Carry out systematic efforts to strengthen school providers and school heads' ability to offer the newly arrived children/students an education with high quality and equity with the goal of improving the conditions for good learning outcomes for these students"

General offers for pre-schoolers and professionals

- Pre-school is offered for all children from 12 month of age if the parents are working or studying and from 3 years of age if parents are not working or studying.
- Municipalities often offers "Open preschool" for stay at home-parents and their children, sometimes also special open preschools for refugee children and their parents.
- Providing support materials and in-service training/collaborative learning, regarding quality aspects, multilingualism, language development

Targeted interventions





Vt 2016

- 1 Pajala
- 2 Överkalix
- 3 Dorotea
- 4 Åsele
- 5 Ragunda
- 6 Kramfors
- 7 Älvdalen
- 8 Ljusnarsberg
- 9 Norberg
- 10 Sunne
- 11 Laxå
- 12 Götene
- 13 Gotland
- 14 Hultsfred
- 15 Lessebo
- 16 Borgholm
- 17 Kalmarsunds Gyfö
- 18 Östra Göinge
- 19 Olofström
- 20 Simrishamn
- 21 Torsås

Ht 2016

- 22 Leksand
- 23 Sala
- 24 Munkedal
- 25 Ydre
- 26 Valdemarsvik
- 27 Svenljunga
- 28 Arjeplog
- 29 Sorsele
- 30 Storuman
- 31 Vilhelmina
- 32 N Västmanlands Ubf
- 33 Flen
- 34 Eksjö
- 35 Nybro
- 36 Tingsryd
- 37 Mörbylånga
- 38 Ronneby
- 39 Perstorp

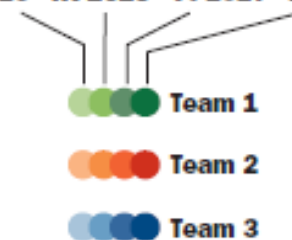
Vt 2017

- 40 Lapplands Gyfö
- 41 Jokkmokk
- 42 Filipstad
- 43 Vindeln
- 44 Vansbro
- 45 Torsby
- 46 Skinnskatteberg
- 47 Hedemora
- 48 Askersund
- 49 Karlsborg
- 50 Sölvesborg-Bromölla Kofö

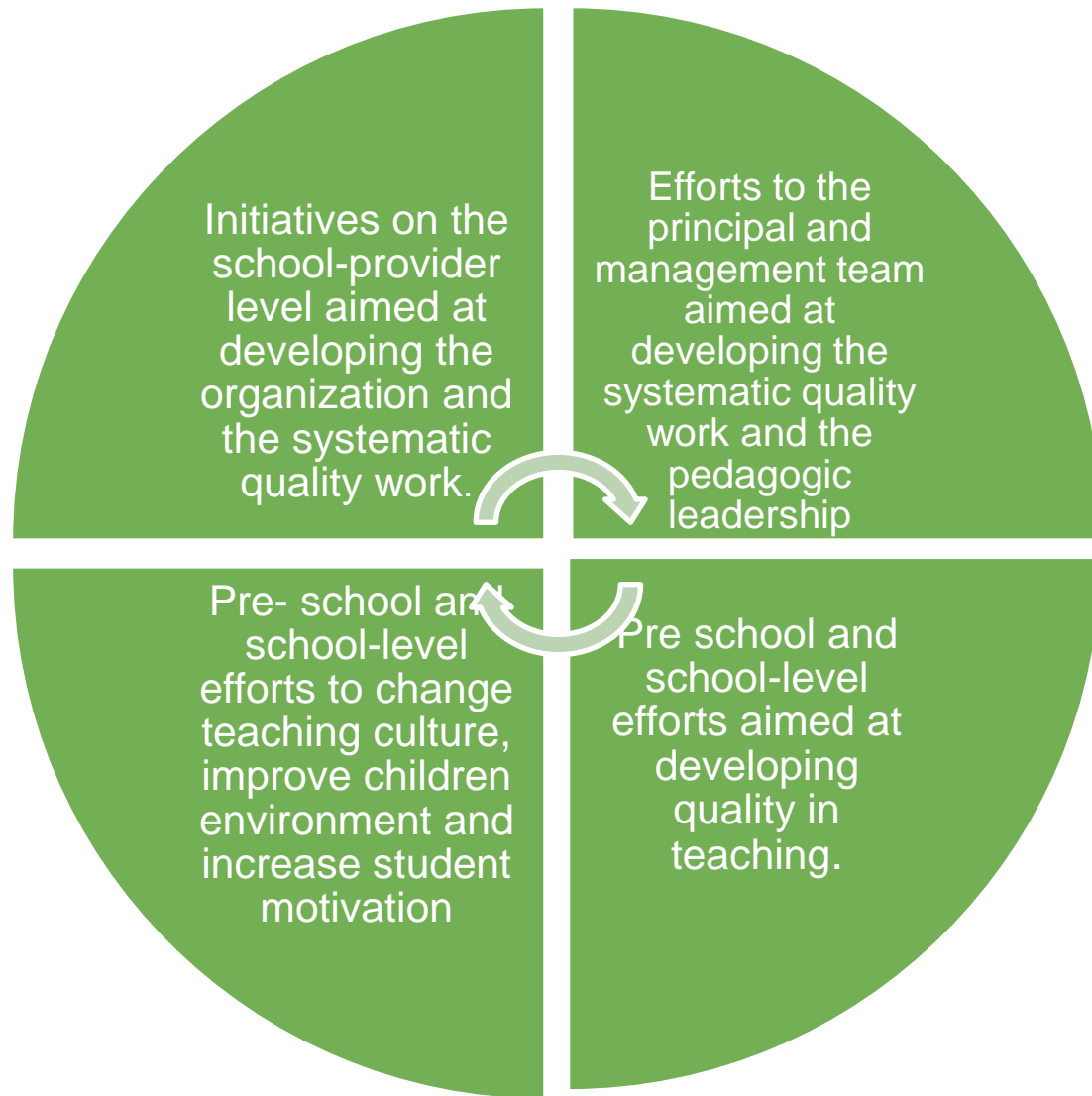
Ht 2017

- 51 Piteå
- 52 Vänersborg
- 53 Säffle
- 54 Kunskapsförb. Väst
- 55 Hällefors
- 56 Lindesberg
- 57 Söderhamn
- 58 Ånge
- 59 Nordmaling
- 60 Hälsinglands Ubf
- 61 Aneby
- 62 Vaggeryd
- 63 Sävsjö
- 64 Hagfors
- 65 Ödeshög
- 66 Sydärkes Ubf

Vt 2016 Ht 2016 Vt 2017 Ht 2017



Identified needs





Thank you for your attention

anna.osterlund@skolverket.se



Skolverket